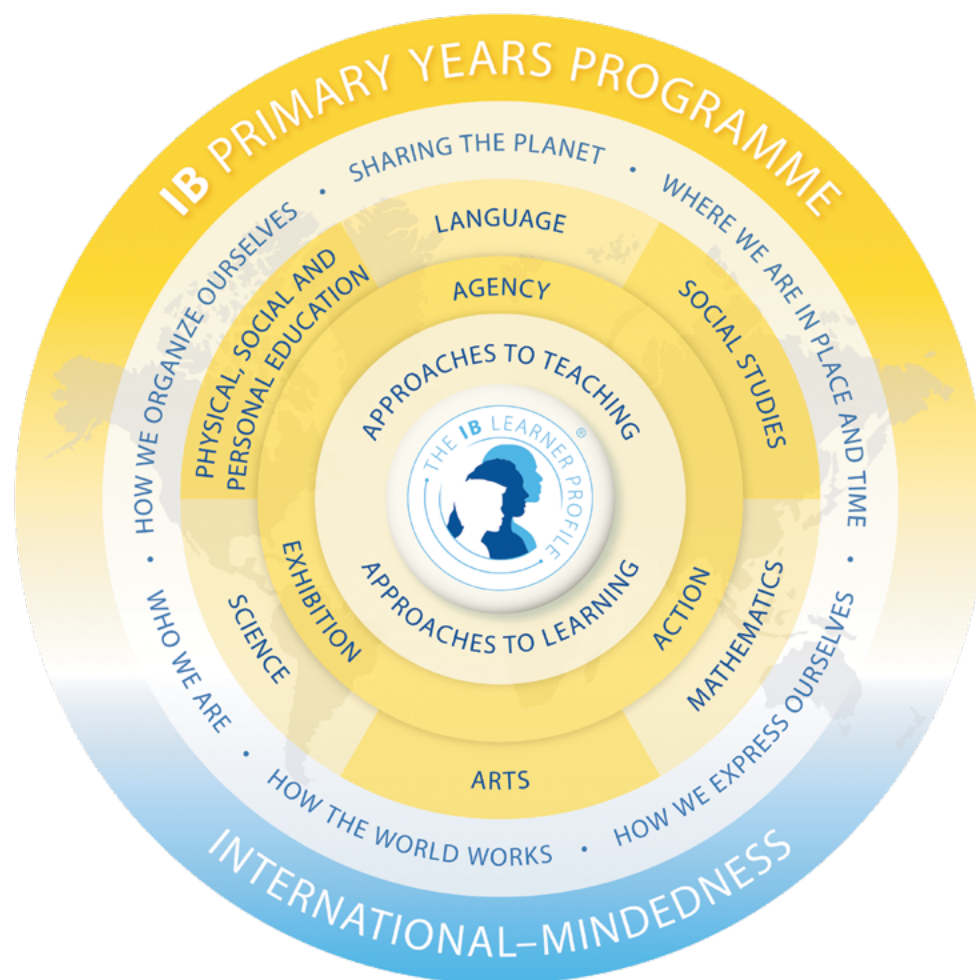




An overview of the Primary Years Programme curriculum



A thoughtful curriculum designed to build lifelong skills

The IB Primary Years Programme (PYP) curriculum uses a caring and transformative approach, based on research into how children learn, how teachers teach and what makes assessment effective.

Your school will receive a comprehensive PYP framework, which can be customized to create a curriculum that is engaging and challenging for young learners. It is deliberately flexible and can be tailored to diverse needs, cultures and contexts—wherever you are in the world.

Your school will also receive the 'Programme standards and practices' (PSP) framework, which is designed to help you develop the environment, culture, policies and processes you may need to achieve the best PYP practice and outcomes.

With IB support, every step of the way

Once your school is accepted as an IB candidate, you will be assigned an IB representative to work with you to develop your PYP curriculum. This expert consultant will share deep experience, best practice and personalized recommendations to guide your success.

How does the curriculum fit together?

A flexible framework

The PYP is structured around six transdisciplinary themes, culminating in an exhibition that displays the students' learning journey for the whole community to enjoy. This is underpinned by ongoing immediate assessment and a culture of agency, which helps children thrive through ownership of their learning.

For learning without boundaries

Young children do not necessarily think in subjects and this is why the PYP embraces six transdisciplinary themes: Who we are, where we are in place and time, how we express ourselves, how the world works, how we organize ourselves, and sharing the planet. By guiding learning across and beyond the six transdisciplinary themes, children can develop a genuine love for learning and a mindset that embraces challenge and seeks opportunity. This also allows teachers to naturally build on what children know, as well as their areas of interest.

Six transdisciplinary themes:

- 1 Who we are
- 2 Where we are in place and time
- 3 How we express ourselves
- 4 How the world works
- 5 How we organize ourselves
- 6 Sharing the planet

With emphasis on agency

The PYP encourages a culture of voice, choice and ownership, in which children feel confident to explore ideas independently. The PYP framework recognizes and supports the development of agency, self-efficacy and action. The exhibition is designed to display this, by empowering children to follow their passions and collaborate on an in-depth project, which is then shared and celebrated with their community. This culture of agency extends to teachers, who are entrusted as the architects of learning and supported through professional development opportunities.

All supported by ongoing assessment

Through a process of ongoing assessment, children are given immediate feedback and feed-forward that helps them develop their confidence, resilience and wellbeing. Teachers can also regularly reflect on each child's progress and interests, making it easy to adjust learning experiences for the best outcomes.

