



German Extension

Stage 6 Syllabus

Original published version updated:

Updated July 2008 – Official Notice BOS 32/08, Vol 17 No 3
June 2009 – Assessment and Reporting information updated

© 2009 Copyright Board of Studies NSW for and on behalf of the Crown in right of the State of New South Wales.

This document contains Material prepared by the Board of Studies NSW for and on behalf of the State of New South Wales. The Material is protected by Crown copyright.

All rights reserved. No part of the Material may be reproduced in Australia or in any other country by any process, electronic or otherwise, in any material form or transmitted to any other person or stored electronically in any form without the prior written permission of the Board of Studies NSW, except as permitted by the *Copyright Act 1968*. School students in NSW and teachers in schools in NSW may copy reasonable portions of the Material for the purposes of bona fide research or study. Teachers in schools in NSW may make multiple copies, where appropriate, of sections of the HSC papers for classroom use under the provisions of the school's Copyright Agency Limited (CAL) licence.

When you access the Material you agree:

- to use the Material for information purposes only;
- to reproduce a single copy for personal bona fide study use only and not to reproduce any major extract or the entire Material without the prior permission of the Board of Studies NSW;
- to acknowledge that the Material is provided by the Board of Studies NSW;
- not to make any charge for providing the material or any part of the Material to another person or in any way make commercial use of the material without the prior written consent of the Board of Studies NSW and payment of the appropriate copyright fee;
- to include this copyright notice in any copy made;
- not to modify the Material or any part of the material without the express prior written permission of the Board of Studies NSW.

The Material may contain third party copyright materials such as photos, diagrams, quotations, cartoons and artworks. These materials are protected by Australian and international copyright laws and may not be reproduced or transmitted in any format without the copyright owner's specific permission. Unauthorised reproduction, transmission or commercial use of such copyright materials may result in prosecution.

The Board of Studies has made all reasonable attempts to locate owners of third party copyright material and invites anyone from whom permission has not been sought to contact the Copyright Officer, ph (02) 9367 8289, fax (02) 9279 1482.

Published by Board of Studies NSW
GPO Box 5300
Sydney 2001
Australia

Tel: (02) 9367 8111
Fax: (02) 9367 8484
Internet: <http://www.boardofstudies.nsw.edu.au>

ISBN 0 7313 4628 9

2009366

Contents

| | | |
|----|---|----|
| 1 | The Higher School Certificate Program of Study..... | 5 |
| 2 | Rationale for German Extension in the Stage 6 Curriculum..... | 6 |
| 3 | Continuum of Learning for German Stage 6 Students..... | 7 |
| 4 | Aim..... | 9 |
| 5 | Objectives..... | 9 |
| 6 | Course Structure..... | 10 |
| 7 | Objectives and Outcomes..... | 11 |
| | 7.1 Table of Objectives and Outcomes..... | 11 |
| 8 | Content..... | 12 |
| | 8.1 Theme and Issues..... | 12 |
| | 8.2 Text..... | 12 |
| | 8.3 Text Types..... | 14 |
| | 8.4 Vocabulary..... | 14 |
| | 8.5 Grammar..... | 15 |
| 9 | Course Requirements..... | 17 |
| 10 | Post-school Opportunities..... | 18 |
| 11 | Assessment and Reporting..... | 19 |

1 The Higher School Certificate Program of Study

The purpose of the Higher School Certificate program of study is to:

- provide a curriculum structure which encourages students to complete secondary education;
- foster the intellectual, social and moral development of students, in particular developing their:
 - knowledge, skills, understanding and attitudes in the fields of study they choose
 - capacity to manage their own learning
 - desire to continue learning in formal or informal settings after school
 - capacity to work together with others
 - respect for the cultural diversity of Australian society;
- provide a flexible structure within which students can prepare for:
 - further education and training
 - employment
 - full and active participation as citizens;
- provide formal assessment and certification of students' achievements;
- provide a context within which schools also have the opportunity to foster students' physical and spiritual development.

2 Rationale for German Extension in the Stage 6 Curriculum

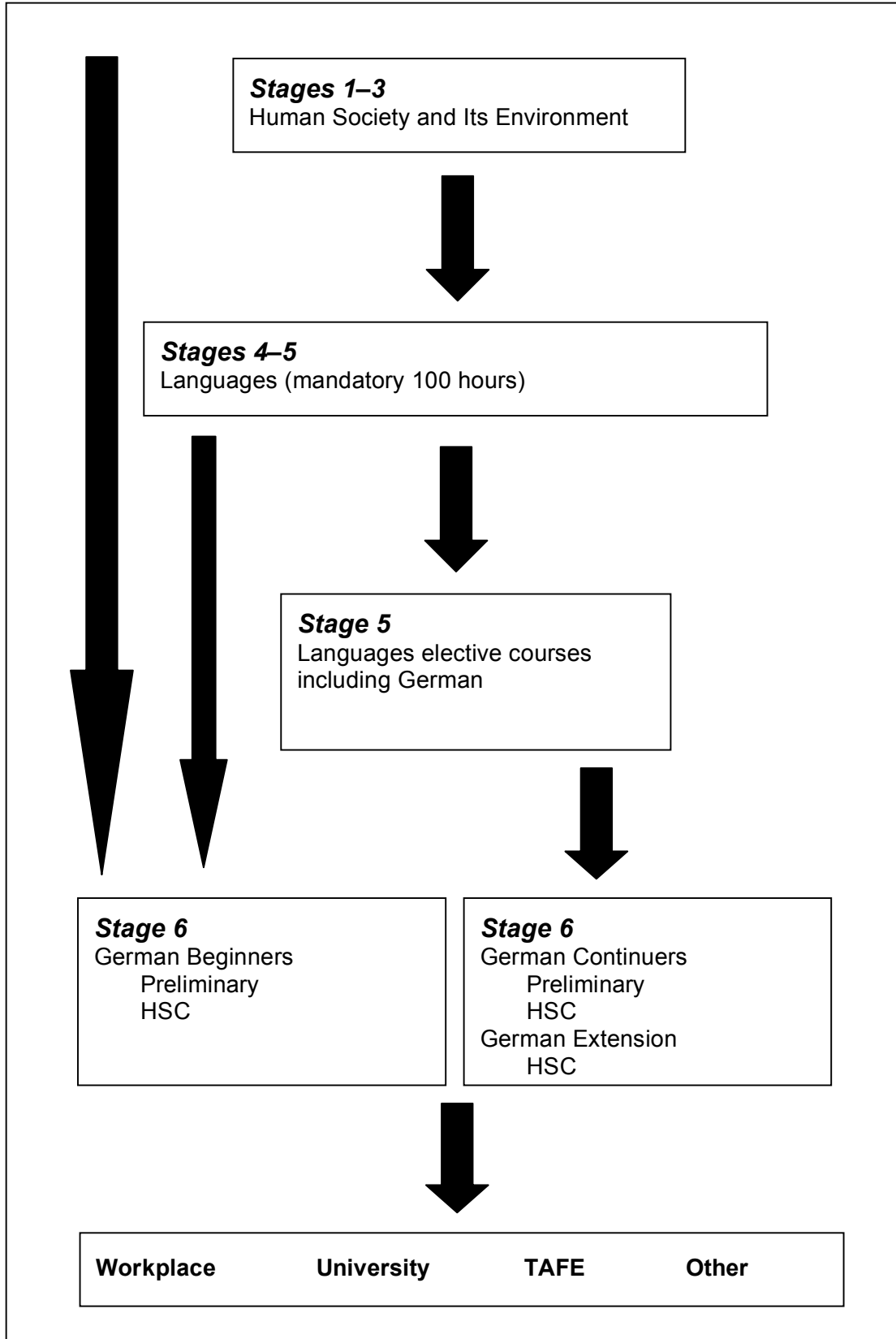
The Extension course builds upon the body of knowledge and skills acquired in the German Continuers course. It provides students with opportunities to develop a greater competence and fluency in the language, and to explore contemporary issues in German.

The German Extension course provides opportunities for students to:

- enhance their enjoyment of learning German by broadening and deepening their language experience
- gain insight into the culture of German-speaking communities and the communities' perspectives on contemporary issues
- gain an appreciation of the German language through the study of contemporary texts
- use German as an adjunct to their career path.

The German Extension course complements other subjects in the Stage 6 curriculum and assists students to prepare for tertiary education, employment, and full and active participation as citizens in a multicultural society.

3 Continuum of Learning for German Stage 6 Students



German Extension Stage 6 Syllabus

The New South Wales curriculum provides opportunities for students to study a language or languages from Early Stage 1 through to Stage 6.

In the K–6 (Stages 1–3) Human Society and Its Environment key learning area, students develop an awareness of languages and may learn about the world through the study of a language, such as German.

In Years 7–10, a language is a mandatory component of the School Certificate, with students being required to complete 100 hours of language study. Elective study in Stages 4–5 in German builds upon the mandatory study.

Stage 6 offers students the opportunity to continue the study of German at Continuers level with the option of an Extension course. The Extension course builds upon the German Continuers course. Students may also begin the study of German in Stage 6 by studying the German Beginners course.

4 Aim

The aim of the *German Extension Stage 6 Syllabus* is to enhance students' knowledge and understanding of a range of issues as reflected in contemporary German texts, while extending their ability to use and appreciate German as a medium for communication, and creative thought and expression.

5 Objectives

Students will achieve the following objectives:

Objective 1 — present and discuss opinions, ideas and points of view in German

Objective 2 — evaluate, analyse and respond to text that is in German and that reflects the culture of German-speaking communities.

Meeting these objectives will involve using the skills of listening, speaking, reading and writing, either individually or in combination, and being able to move between German and English.

6 Course Structure

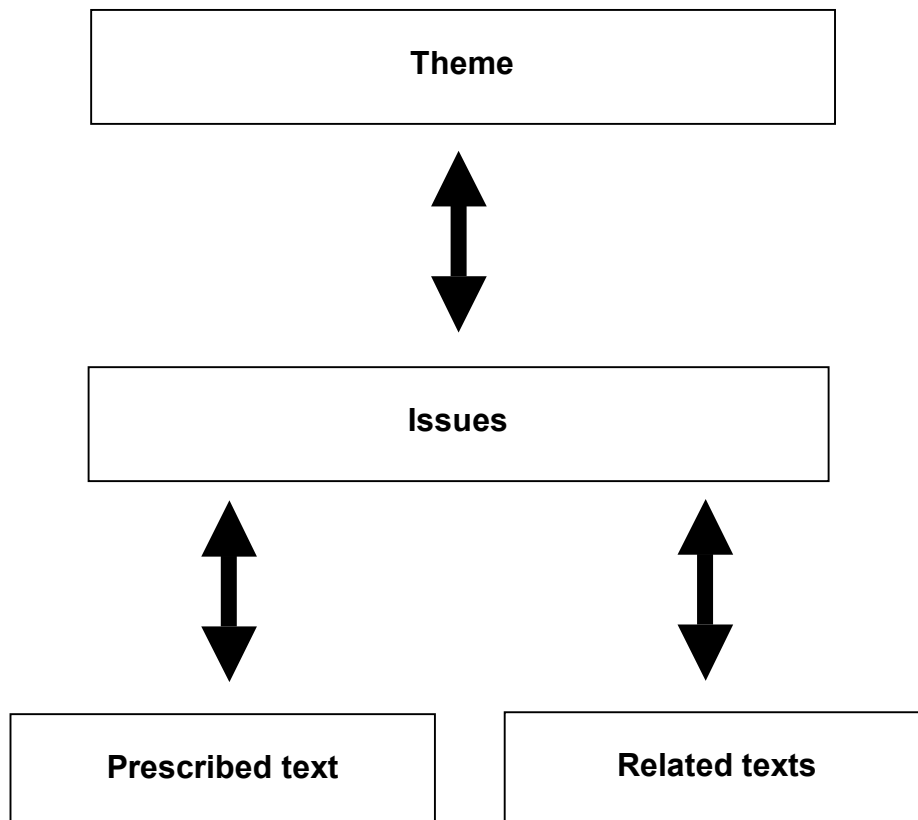
The organisational focus of the German Extension course is the theme – the individual and contemporary society. A number of issues that exemplify aspects of the theme are prescribed for study. Students engage with the issues through the study of a prescribed text and related texts.

Study of the issues and prescribed text will involve:

- exploring the relationship between the issues and the prescribed text
- creating original text in response to aspects of the prescribed text
- identifying meaning and how it is conveyed in the prescribed text
- evaluating linguistic and cultural features of the prescribed text
- analysing the sociocultural context of the prescribed text.

To support the study of the issues and to further develop knowledge of German and German-speaking communities, students will be required to read, view and/or listen to a range of related texts. Study of related texts will involve evaluating how the issues are presented in these texts.

The course structure is represented schematically below:



The prescribed text and issues, and the resources list are published on the Board of Studies website (<http://www.boardofstudies.nsw.edu.au>).

7 Objectives and Outcomes

The outcomes represent the knowledge, skills and understanding that students will achieve by the end of the German Extension course based on this syllabus. The outcomes have been linked to one objective but may derive from more than one. The degree to which students achieve these outcomes will be reported in the performance scale. These outcomes build on the outcomes for the German Continuers course. It is implicit in these outcomes that students have completed the Preliminary course in the German Continuers course.

7.1 Table of Objectives and Outcomes

| Objectives | Outcomes |
|--|---|
| The student will: 1 present and discuss opinions, ideas and points of view in German | The student: 1.1 discusses attitudes, opinions and ideas in German 1.2 formulates and justifies a written or spoken argument in German |
| 2 evaluate, analyse and respond to text that is in German and that reflects the culture of German-speaking communities | 2.1 evaluates and responds to text personally, creatively and critically 2.2 analyses how meaning is conveyed 2.3 analyses the social, political, cultural and/or literary contexts of text that is in German |

8 Content

8.1 Theme and Issues

The theme – the individual and contemporary society – is the organisational focus of the German Extension course and will be studied through a number of issues and a range of texts.

Not all issues will require the same amount of study time. The length of time and depth of treatment determined for each issue will depend on a number of factors, including:

- the particular objective(s) being covered
- the needs and interests of the students
- the linguistic and cultural complexity of the prescribed text, and of the related texts selected for study
- the nature of tasks undertaken
- the language that is used in responding
- the nature of the language itself.

Teachers should structure and organise programs based on the prescribed issues to meet the objectives and outcomes of the syllabus.

8.2 Text

The term 'text' refers to any form of communication – spoken, written or visual, or any combination of these.

Students will analyse and evaluate text from linguistic (language forms and features, structure) and cultural (thematic, contextual, social and political) perspectives, and consider how they are related.

Students will also be expected to create a range of texts appropriate to a variety of contexts, purposes and audiences.

In this way, students will develop skills in listening, speaking, reading and writing. They will also develop skills in critical literacy by reflecting on their own and other cultures, and by making connections between German and English, and/or other languages.

8.2.1 Prescribed Text

The prescribed text may be an extract or extracts from a novel or film, or a selection of short stories or songs. Where a prescribed text consists of an extract or extracts, students should be familiar with the whole text.

Students should know and understand how particular features, used in the text type prescribed, convey meaning. A knowledge of specialised, technical terminology, however, is not a requirement.

The table below indicates the features of text types with which students should be familiar. These include both general features that relate to all text types and specific features that relate to the particular text type set for study.

| General features common to all text types | Features specific to each prescribed text type may include |
|---|--|
| <ul style="list-style-type: none"> • language <ul style="list-style-type: none"> – colloquial – dialect – accent – use of irony – satire – humour – tenses – ellipses • structure • setting <ul style="list-style-type: none"> – time – place – cultural aspects • character <ul style="list-style-type: none"> – key/secondary • imagery <ul style="list-style-type: none"> – symbolism – recurrent motif – simile/metaphor • relationship between author/director/narrator/singer and the audience • narrative technique <ul style="list-style-type: none"> – perspective – point of view • tone and mood | <ul style="list-style-type: none"> • novel <ul style="list-style-type: none"> – plot development, sequencing of events, use of flashback – use of dialogue, narrative – use of allegory, extended metaphor |
| | <ul style="list-style-type: none"> • short story <ul style="list-style-type: none"> – brevity and compactness – focus on one situation or a few crucial moments – limited character development – fragmented plot – inconclusive or unexpected ending |
| | <ul style="list-style-type: none"> • song <ul style="list-style-type: none"> – instrumentation, voice, melody, rhythm, tempo – use of repetition – use of refrain – rhyme, rhythm, assonance, alliteration |
| | <ul style="list-style-type: none"> • film <ul style="list-style-type: none"> – plot development, sequencing of events, use of flashback – shot composition/framing/editing – lighting/sound/colour – costuming |

Refer to the Board's website www.boardofstudies.nsw.edu.au for the prescribed text.

8.2.2 Rotation of prescribed text and issues

Each year a text and 2–3 issues will be prescribed for study. These will be reviewed on a regular basis and will be published on the Board of Studies website (www.boardofstudies.nsw.edu.au).

8.2.3 Related Texts

In addition to the prescribed text, students will read, listen to and view a range of texts relevant to the prescribed issues. Texts may be authentic or modified to allow students to engage with the prescribed issues at a level appropriate to their needs, interests and experience.

8.3 Text Types

The text types listed in the *German Continuers Stage 6 Syllabus* are assumed knowledge.

In addition, students are expected to be able to produce the following text types in the external examination:

- formal letter
- monologue
- narrative account*
- script of a conversation
- short essay

Teachers may introduce students to a wider range of text types in the course of their teaching and learning program.

*Please note: Narrative account may include, for example, the writing of an alternative ending to a short story, or the rewriting of an excerpt from a different perspective.

8.4 Vocabulary

While there is no prescribed vocabulary list, it is expected that students will be familiar with a range of vocabulary and expressions relevant to the prescribed issues.

8.4.1 Dictionaries

Students should be encouraged to use dictionaries. It is expected that teachers will assist students to develop the necessary skills and confidence to use dictionaries effectively. Suggested editions are published in the Resources on the Board of Studies website (www.boardofstudies.nsw.edu.au). Students are able to use monolingual and/or bilingual print dictionaries in the written examination. Information regarding the use of dictionaries in the HSC examination may be found in *Assessment and Reporting in German Extension Stage 6*.

8.5 Grammar

The following grammatical structures are those that students studying German in an Extension course are expected to know and use. They build on the grammatical items prescribed in the *German Continuers Stage 6 Syllabus*, which are assumed knowledge.

| Grammatical item | Sub-elements | Example(s) |
|------------------|--|--|
| Verbs | <p>tenses:</p> <p>imperfect</p> <p>pluperfect</p> <p>subjunctive:</p> <p>subjunctive I:</p> <p>indirect speech †</p> <p>subjunctive II/ conditional perfect:</p> <p>omission of <i>wenn</i> †</p> <p>passive voice</p> <p>infinitives with verbs of perception, motion, and with <i>lassen</i></p> <p>modal verbs:</p> <p>perfect tense †</p> <p>conditional perfect tense †</p> | <p><i>er ging, sie machte</i></p> <p><i>Er war gegangen.</i></p> <p><i>Sie hatte es gemacht.</i></p> <p><i>Er behauptete, er habe alles schon erledigt.</i></p> <p><i>Er hätte es früher gemacht, wenn ...</i></p> <p><i>Hätte er das früher gemerkt, wäre er vorsichtiger gewesen.</i></p> <p><i>Das Parkhaus wird um 24 Uhr geschlossen.</i></p> <p><i>Er sah sie kommen.</i></p> <p><i>Wir gehen schwimmen.</i></p> <p><i>Ich habe meinen Mantel reinigen lassen.</i></p> <p><i>Er hat das gewollt.</i></p> <p><i>Er hat es machen wollen.</i></p> <p><i>Er hätte es machen können.</i></p> |
| Particles | <p>modal particles †:</p> <p><i>doch, ja, denn, mal, schon, wohl, zwar, allerdings, freilich, überhaupt</i></p> | <p><i>Das ist ja schön.</i></p> <p><i>Was machst du denn?</i></p> <p><i>Was willst du überhaupt machen?</i></p> |

† receptive use

| Grammatical item | Sub-elements | Example(s) |
|-------------------------|--|--|
| Prepositions | genitive case: <i>wegen</i> <i>trotz</i> <i>während</i> | <i>Wegen des schlechten Wetters konnte die Maschine nicht abfliegen.</i> <i>Trotz der Kälte ist er schwimmen gegangen.</i> <i>Während der Schulferien arbeiten viele Jugendliche.</i> |
| Conjunctions | correlative: <i>entweder... oder</i> <i>weder ... noch</i> <i>sowohl ... als auch</i> | <i>Entweder du kommst mit mir oder du bleibst bei deiner Großmutter.</i> <i>Sie ist weder glücklich noch traurig.</i> <i>Sowohl meine Eltern als auch meine Großeltern sind in Europa geboren.</i> |
| Adjectives | extended pre-noun adjectival expressions † present participle used as adjective † | <i>ein kurz vorher geschriebener Brief</i> <i>die weinenden Kinder</i> |
| Pronouns | relative: all cases | <i>Der alte Mann, dessen Frau gestern gestorben ist, ...</i> |
| Word order | relative clauses indirect questions double infinitives in subordinate clauses † | <i>Wie heißt der Fluß, an dem Heidelberg liegt?</i> <i>Weißt du nicht, wo er wohnt?</i> <i>..., weil er keine Lösung hat finden können.</i> |

† receptive use

9 Course Requirements

For the Extension course:

- the Continuers Preliminary course is a prerequisite
- the Continuers HSC course is a co-requisite
- 60 indicative hours are required to complete the course.

10 Post-school Opportunities

The study of German provides students with knowledge, understanding and skills that form a valuable foundation for a range of courses at university and other tertiary institutions.

In addition, the study of German assists students to prepare for employment, and full and active participation as citizens. In particular, there are opportunities for students to gain recognition in Vocational Education and Training. Teachers and students should be aware of these opportunities.

11 Assessment and Reporting

Advice on appropriate assessment practice in relation to the German Extension syllabus is contained in *Assessment and Reporting in German Extension Stage 6*. That document provides general advice on assessment in Stage 6 as well as the specific requirements for the HSC course. The document contains:

- mandatory components and weightings for the internal assessment of the HSC course
- the HSC examination specifications, which describe the format of the external HSC examination.

The document and other resources and advice related to assessment in Stage 6 German Extension are available on the Board's website at www.boardofstudies.nsw.edu.au/syllabus_hsc